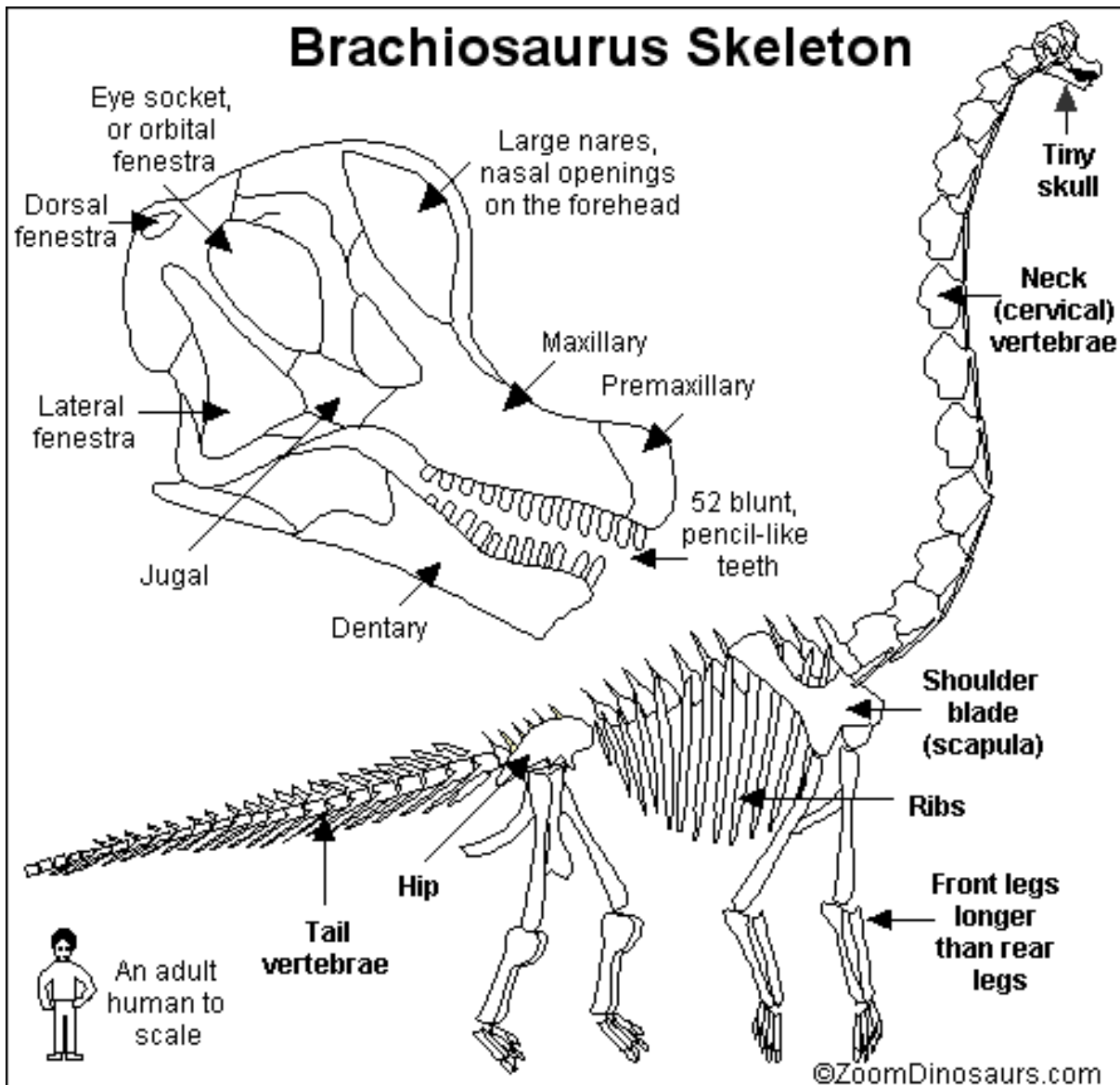


Brachiosaurus Skeleton Printout



Brachiosaurus was a giant, long-necked, plant-eating dinosaur that lived during the Jurassic period, 156-145 million years ago.

Anatomy: This sauropod had a bulky body, a small head, blunt teeth, and a short, thick tail. Its front legs were longer than its hind legs; this is unusual for dinosaurs. Brachiosaurus was up to 40-50 feet tall (12-16 m) and about 85 feet (26 m) long. It weighed roughly 50-80 tons.

Fossils: Brachiosaurus was named in 1903 by paleontologist Elmer S. Riggs. The type species is *B. altithorax*. Fossils have been found in North America and Africa.