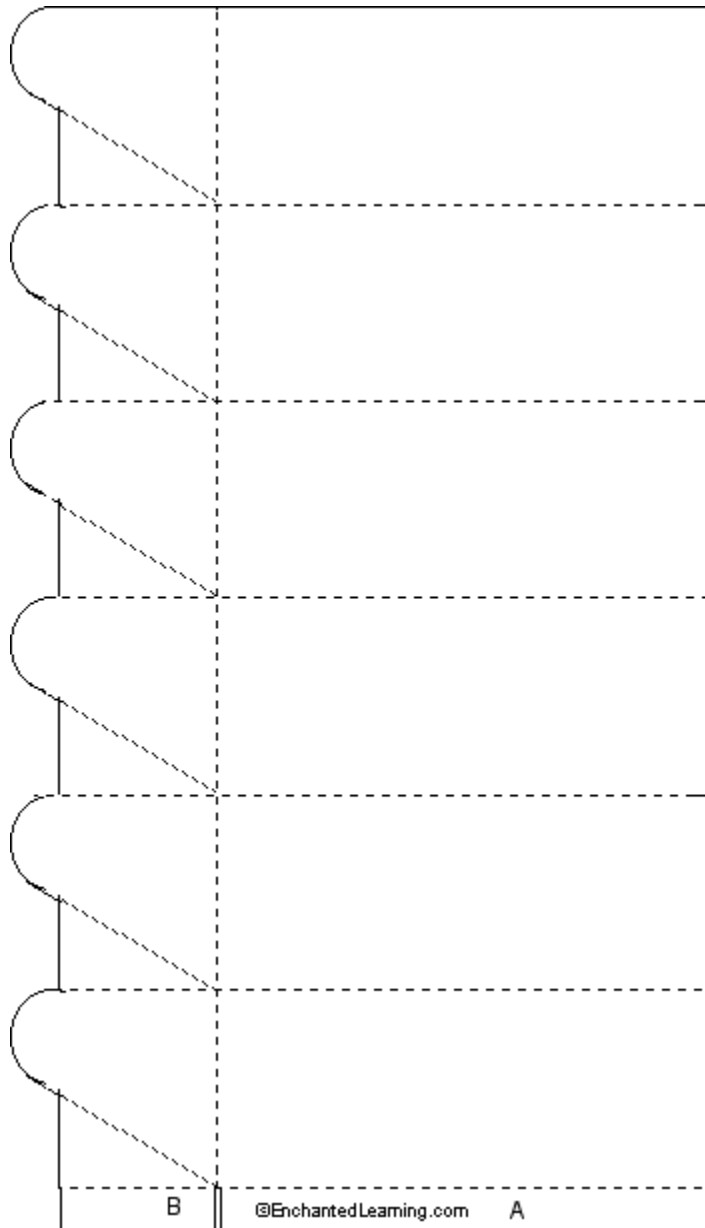
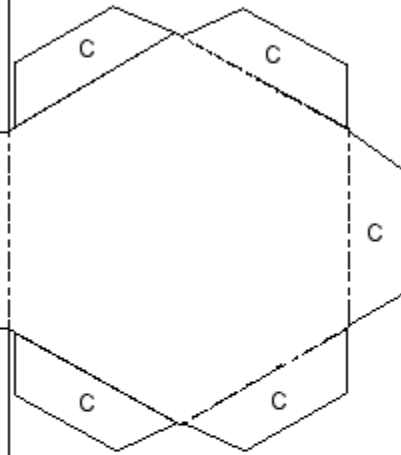


Hexagonal Prism Template



Hexagonal Prism Box

1. Print on heavy paper.
2. Cut along outer edges.
3. Fold along dotted lines (fold the horizontal and vertical lines with the edge pointing down and fold the diagonal lines up).
4. Fold down the tabs labeled C.



4. Glue flaps A and B to the far side of the figure.
5. Glue the tabs C to close one end of the prism.
6. To close the other end, gently accordion fold the edges in like the petals of a flower.